



PANUI - NEWSLETTER - week 1, term 2, 2021

From the Tumuaki - Principal

Kia ora e te whānau

Welcome back to Term 2. It's great to see the students back refreshed after a break and ready for a busy term of learning and the start of a variety of winter sports.

REMEMBER it is the Plimmerton School PTA Kids Clothes Swap event this Saturday 8th May. This is a new PTA event and we would really appreciate your support. Please see the information in the PTA section below.

Thank you to those families who have already responded to the PTA request for event support sent out recently by email. If you haven't replied, a reminder will be coming out soon. So important that we all get involved in supporting our wonderful PTA and share the load together.



BASKETBALL COACHING

On Wednesday we were lucky to have two of the Wellington Saints players visit our school and coach some of our keen basketballers from Taupo syndicate. The men took them for some skills and had them working hard. The training must have paid off because our school basketball team played their first game of the season later that day and had a convincing win. During week 4 the players will be back to train with some students from the other syndicates.



Saints players Marnie and Kenneth with the school basketball team, Laith, Kauri, Toby, Kevin, Zara, Seth, Ella, Lenaia, Nick, Ayden and Orlando.

SAINTS BASKETBALL TICKETS

Today we received a bunch of free tickets for Friday night's game at the TSB Bank Arena, Queens Wharf. Each ticket admits an adult and a child. If you would like some free tickets they will be available at the office tomorrow morning. First in first served.

SCHOOL WINTER SPORTS TEAMS

Our hockey, netball and basketball teams all start their season this week. A huge thank you to all the parents who have volunteered to coach and manage teams. If you or your child are involved please take some time to look at our schools sports code of conduct at the end of this newsletter (based on NZRFU junior rugby codes).

INTERACTION DAY/PINK SHIRT DAY



Next Friday 14th May the school is celebrating Pink Shirt Day. This is a week earlier than the national Pink Shirt Day on the 21st May, as that is our cross country day. We will celebrate by holding an interaction day. Students will be divided into groups of mixed ages and rotate around a variety of activities based on the theme of "anti bullying". This supports our introduction of KiVA this year. The children are encouraged to wear pink to school that day and will be eating their lunch with their interaction group. Please avoid fish and chips for lunch on this day so the students have time to sit and eat with their group. The purpose of interaction days are for students and staff to interact with other children across the school, build relationships and have fun. The student council are helping to run the interaction day.

PŌWHIRI

Our first pōwhiri for the year will be held on **Tuesday 18 May at 9.15am**. New students and their whānau will be formally welcomed to the school. Invitations to attend have been sent home to the whānau of newcomers (manuhiri). If you or your child have missed being welcomed at a previous pōwhiri, then you are most welcome to come and join the pōwhiri with the group being welcomed into the school. Also any parents or family members who have been previously welcomed (tangata whenua) are most welcome to attend to help us welcome our new families. The Pōwhiri will be followed by morning tea for the manuhiri.



ANZAC DAY COMMEMORATION

On ANZAC day a group of students from school attended the commemoration service at the Peace Memorial in Porirua. The students laid a beautiful wreath in our school colours on the memorial at the end of the service.



At the service - Back: Christian, Felix, James, Riley. Front: Hannah, Milla, Maia, Hannah



KIWI EXAMS

Year 5 to 8 students can choose to participate in the "Kiwi Competition" Science, Mathematics and English exams which are facilitated by the University of Canterbury. These examinations are based on the NZ Curriculum. This replaces the ICAS exams which are based on an Australian curriculum, and have become very expensive! The Kiwi Exam entry is \$9.50 per exam.

Entries close next Thursday 12 May, so if your child is interested please click on this [link](#) and complete the form.

CROSS COUNTRY

You will be aware the students have started training for the school cross country which is in week 3. Parents are welcome to attend this event which will be held at the Plimmerton Domain on Friday 21st May.

PLEASE RETURN TO THE OFFICE

Lost/Not returned end of Dec 2020 - and Urgently required - Black Canterbury sports bag with 2 sets of new fluorescent green netting type singlets, x3 basketballs (red Chicago Bulls, blue Oklahoma, yellow and purple LA Lakers). Also a first aid kit and ball pump. Please return to the office asap. We need them back urgently.

SCHOOL PHOTOS

Please mark Tuesday 11 and Wednesday 12 May in your calendar for school photos. These are for all classes except Kōwhiri syndicate (Years 1 & 2). They will have theirs in term 4. Sports teams (Hockey, Netball and Basketball) will also have their photos taken on these two days. Team managers and coaches will be contacted. Photo order forms will be sent home after photo day.

Ngā mihi

Mike Forrest, Tumuaki - Principal

PTA News

KIDS CLOTHES SWAP FUNDRAISER

REMEMBER it is the Plimmerton School PTA Kids Clothes Swap event this Saturday 8th May. We would really appreciate your support by:

- Buying a ticket and coming along
- Donating your quality newborn to teenage clothes and shoes - bring them to the school office asap
- Volunteering for set up or to help during the event
- Sharing the event with your friends

There is a luxury Mother's Day hamper as a lucky door prize, you must register and pay before the event to be in to win!

Details on the event and how to register and pay are in this Facebook event:

<https://www.facebook.com/events/386916452275108>

And the google form to reserve tickets is here: forms.gle/SrTWckXXPiWk1Znz7

Please contact us with any questions,
plimschoolkidsclotheswap@gmail.com



Community News

These are provided as a service to the community & may not reflect the policies and practices of the school.



With Roz Baxter

Speech and Drama Teacher

Beginning Term 2

Plimmerton School

Individual lessons

In school time

My passion is to cultivate and encourage confident and creative communicators.

I love supporting children and adolescents in their own and collective Drama, Speaking and Performance goals

Speech and Drama classes are designed to teach children how to perform poems, plays and short skits.

Lessons develop a students ability to speak with clarity and fluency.

Speech and Drama and its various forms it increases confidence and self esteem.

There's an opportunity for students to sit New Zealand Speech Board exams, these are an additional cost to the lessons provided.

It enhances school work and develops an individuals strengths and talents.

It Draws out shyness.

Is lots of fun!

Contact Roz Baxter

0276939573

jonnyrozb@xtra.co.nz

MARKETS AT PAREMATA SCHOOL

Paremata School Community Market
Local Stallholders
Fresh Produce
Food, Arts & Crafts
Kids Market

SECOND SATURDAY OF EVERY MONTH
(IN THE SCHOOL HALL)
10AM - 2PM



Paremata School
Attitude determines Altitude Whakapono kia koe

Proud to be supporting
our community.

BBQ Proudly Sponsored by
Ben Cartwright and the team

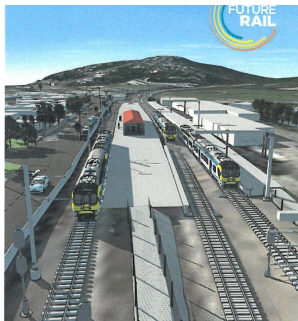


**KELLY SPORTS TERM 2
WARM UP WINTER SPORTS!
YEARS 0-4
PLIMMERTON SCHOOL**

Come and try Netball, Basketball, Football, and Rippa Rugby!
Learn new skills and improve ability. We use games, drills and exercises to teach game sense and team play. It's a great way to try new sports, improve skills and maintain fitness – all while having a great time!

**Friday's 3.05pm-4.05pm!
Sessions Start - Friday 14 May 2021!**

Book online at www.kellysports.co.nz and put "Plimmerton School" in the School Box.

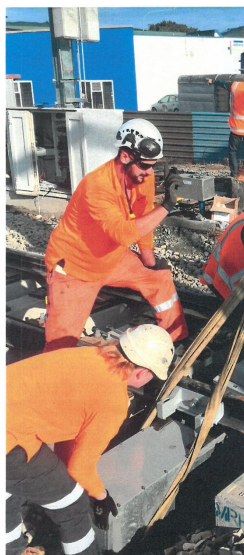


Plimmerton Station upgrade

February 2021–Early 2023



08-1045103 KIWI RAIL Plimmerton Station Upgrade Brochure



What is the Plimmerton Station upgrade?

KiwiRail and Greater Wellington Regional Council are working together to upgrade the rail network across the Wellington region. This includes improvements to Plimmerton Station to allow more trains to operate, catering for projected population growth over the next 25 years. The works we're carrying out will allow trains to turn around at Plimmerton. It will mean that trains that currently run from Wellington to Porirua can be extended to Plimmerton, which will help with capacity in peak traffic times.

When is it happening?

The works started in early 2021 and are scheduled to end in early 2023.

What does the work involve?

The work involves building an additional platform and realigning some of the tracks.

We're also making safety improvements. This includes upgrades to the Steyne Avenue and Pascoe Avenue level crossings to comply with current international safety and signalling standards. We will also be removing the existing pedestrian crossing located at the south end of the platform.

The underpass will be extended, its ceiling height increased in one section, and earthquake-strengthened.

At the end of the project, you'll see improved level crossings, a new platform and shelter, an improved underpass, and more trains.

Pedestrian access to the station platforms

will change over the next two years. We will be communicating those changes clearly to make sure people enter and exit the station safely.

Will train services be affected?

Generally speaking, we try to work during periods when commuter demand is lower. This isn't always possible because we sometimes need more time than those periods allow for. During the Plimmerton Station works, some trains may be affected. Any service disruption will be communicated to commuters well ahead of time.

What are the key stages?

In 2021

- Utility services relocation
- Installation of new traction masts for the overhead wiring
- New track alignment at Steyne Avenue level crossing and to the south
- Subway extension and seismic strengthening

In 2022

- Continued track work from Steyne Avenue through to north of the station
- Partial removal of the existing pedestrian crossing at the south end of the platform to comply with design and safety standards
- New platform and track
- Pedestrian level crossing upgrades at Steyne Avenue and Pascoe Avenue

The last major stage of the works will take place during the December 2022-January 2023 Christmas holiday period, when we can get a lot done during a quiet time for commuter traffic.

PLIMMERTON SCHOOL - SPORTS EVENTS CODE OF CONDUCT

FOR PLAYERS

If I am playing for Plimmerton School I will:

- not argue with an official. If I disagree with a decision I will inform the captain, coach or manager during a break or after the competition.
- control my temper. I understand that verbal abuse of officials and other players, or deliberately distracting or provoking an opponent is not acceptable or permitted behaviour in sport.
- work equally hard for myself and my team
- treat all players in my sport as I like to be treated. I will not be mean or take unfair advantage of another player
- co-operate with my coach, teammates and opponents
- display modesty in victory and graciousness in defeat
- participate for my own enjoyment and benefit, not just to please parents and coaches
- respect the rights, dignity & worth of all participants regardless of gender, ability, cultural background or religion
- thank the opposition and officials at the end of the game
- use appropriate language with players, coaches, officials and other spectators.
- present myself and act in an appropriate way at pre-game and after-match functions.

FOR PARENTS/CAREGIVERS AND SPECTATORS

At Plimmerton School we expect and encourage parents, caregivers and spectators to:

- respect officials' and coaches' decisions
- respect the efforts of the opponents
- applaud good plays & performances by both our team & the opponents
- give positive comments that motivate and encourage continued effort
- support our team's efforts and performance
- thank the coaches, officials & volunteers who give their time to sports
- assist when asked by a coach or official
- respect the rights, dignity and worth of all people involved in the game, regardless of their gender, ability or cultural background.
- acknowledge that the game is the player's game not mine.
- use appropriate language with players, coaches, officials & spectators.
- act in an appropriate way at pre-game and after-match functions.



FOR COACHES & MANAGERS

If I am coaching or managing a sports team for Plimmerton School I will:

- remember that players participate for enjoyment and winning is only part of the fun
- never ridicule or yell at players for making a mistake or not winning
- be reasonable in my demands on players' time, energy, and enthusiasm
- operate within the rules and spirit of the game and teach my players to do the same
- ensure that the time players spend with me is a positive experience. All players are deserving of equal attention and opportunities (this includes equal game time and equal starting opportunities across a season).
- ensure equipment and facilities meet safety standards and are appropriate to the age and ability of all players
- display control, respect and professionalism to all involved with the sport including opponents, referees, coaches, officials, administrators, parents, and spectators. I will encourage my players to do the same.
- show concern and caution toward sick and injured players and follow the advice of a physician when determining whether an injured player is ready to recommence training or competition
- respect the rights and dignity of all people involved in the game, regardless of their gender, ability or culture
- use appropriate language with players, coaches, officials and spectators.