



PANUI - NEWSLETTER - Week 8 Term 4, 2023

Mai e te Tumuaki - From the Principal

Kia ora whānau,

Welcome to the final panui of 2023, happy reading as there is a huge amount to celebrate :)

First, let's talk GALA! What a magnificent event and sense of unity within our community, coming on mass to support our kura. Feedback from the day was outstanding. Special acknowledgment must first go to our dedicated PTA members. They spent countless hours over many months to plan and prepare for the one day. By all accounts, it was the most (financially) successful gala in the last decade, raising over \$40,000. Secondly, we must also mention our kura's kaimahi (workers), who also helped on the day or leading up to the event. Lastly, to all of you, the generous whānau who attended and supported on the day, we cannot thank you enough for supporting us.

We are considering using the money raised to create two artificial spaces to replace the grass areas outside the pool and music room. In winter we have limited space for tamariki to play on as the field is often closed. The artificial play areas would allow tamariki a space to use all year round and the surfaces are guaranteed to last for a minimum of 15 years.

Last week was the first of three opportunities for our tamariki to meet their 2024 kaiako and classmates. This is a new initiative we have introduced to support our learners and build strong connections before next year. This is proving to be a very positive initiative and it reflects our commitment to our communities request for stronger relationships, understanding our learners and creating environments that are safe and bullying free.

Speaking of our community's feedback on the Strategic Plan... The feedback and goals have been put together and the final draft was confirmed by the board at last night's meeting. This has taken significantly longer than we had anticipated so we haven't given timely updates for which we apologise. We appreciate your patience and excitement to see what we will deliver in 2024 and 2025. Our staff, BOT and Hongoeka Marae representatives have been involved in developing the implementation plan. Our last action is to consult with staff (again) before the final version is published for implementation next year. We will send this home with a letter from our BOT detailing the reasons for our goals, initiatives and outcomes. There has been a huge amount of learning taken away from the consultation and we have tried our very best to ensure we have been responsive to the needs of our community and what is best for our tamariki now and in their future.

On a personal level, thank you everyone for the support you show our kura and the understanding that any changes we make in our systems and processes are about growing, developing and supporting our tamariki. Sometimes we look at change as a deficit, but change is a catalyst for growth and innovation, fostering adaptation and resilience in individuals and societies. Embracing change opens doors to new opportunities, experiences, and perspectives, breaking the monotony of routine. It stimulates creativity, pushing us beyond comfort zones to discover untapped potential. Change cultivates learning, encouraging the acquisition of new skills and knowledge. It dismantles outdated structures, making room for progress and improvement.

Have a safe and special Christmas, celebrate with whanau and enjoy making special memories together.

Nga mihi,

Chris Steffensen, *Principal - Tumuaki*

2024 Classes

Motuhara	Mana	Hongoeka	Taupo
Rm 1 - Lisa Cuttance Year 2	Rm 10 - Dianne Khan Year 3/4	Rm 20 - Mackenzie Batchelor Year 5/6	Rm 15 - Kate Walker & Stana Billot Year 7/8
Rm 2 - Jeanelle Ymker Year 2	Rm 11 - Brendon Cross Year 3/4	Rm 21 - Rebecca Courtney Year 5/6	Rm 16 - Phil Morris Year 7/8
Rm 3 - Tarsh Wichman Year 1/2	Rm 12 - Grace Macrae Year 3/4	Rm 22 - Katherine O'Neil Year 5/6	Rm 17 - Demelza Murrihy-Topp Year 7/8
Rm 4 - Shannon Ferguson Year 1	Rm 13 - Andrew Brown Year 3/4	Rm 23 - Steve Deluxe Year 5/6	Rm 18 - Emma McClutchie Year 7/8
Rm 5 - Molly Baxter Year 1	Release teachers: Emma Currie, Trish Kolston, Kirstin Toleman		
Rm 6 - Yvette Pierce Year 1			

Coming Events - for your Calendar

Term 4 - Week 9

- Monday 4 - Friday 8 December** Motuhara Water Awareness week
- Tuesday 5 December** Aotea College Year 8 Orientation Day
Wellington Regional Athletics
- Wednesday 6 December** Taupō Fun Day EOTC trip to Hutt Park
Fire truck visiting Motuhara syndicate
- Friday 8 December** Road Patrol training for 2024 Year 7/8s

Term 4 - Week 10

- Thursday 14 December** Motuhara's end of year celebration at Aotea Lagoon
Year 8 Leavers Dinner

Term 4 - Week 11

- Monday 18 December** 5pm -6.30pm - Christmas picnic
- Wednesday 20 December** Last day of school
11am - Leavers Assembly
12 noon - School Finishes after Leavers Assembly

Plimmerton School Community Christmas Get-together 2023

It's December!!

We would love to celebrate the holiday season with you all, at our **Christmas Community Get-together** on Monday 18th December. A flyer with all the details will be coming home soon, but so you know what to expect, here is a breakdown of the evening:

4:45pm - Parking on the field opens 🚗

5:00pm - Find your spot on the turf with your whānau (BYO deck chairs, beanbags, throws, etc)

5:00pm - Scavenger hunt - do this if/when you would like to. 🔍

5:00pm - 6:15pm - Mingling and eating (bring your own picnic or fish and chips) 🍷
 Optional teacher-led games on the courts
 5:30pm - A special visitor arrives! 🎄 Photo opportunity... 📷
 6:10pm - Xmas fashion 'stand and twirl' (bring your 'best' Xmas jumper!) 🧑‍🎄
 6:15pm - Sing-along Christmas medley led by Caroline. Song sheets provided. 🎵
 6:30pm - Ends 🎉

It would be wonderful to see as many of you as possible, for this relaxed, low-key gathering.

School Sports Uniforms - to be returned ASAP

Please return any sports uniforms to Katie in the office in a named bag.

School Donations

Each year, the donations received from our school whānau make a huge difference in what we can offer our students. The school donation is voluntary, so thank you to those who have already contributed this year, we are very grateful for your continued support. More information and payment details can be found on the [school website](#).



The banner features the OfficeMax MySCHOOL logo on the left. The main text reads "Beat the rush and order back to school stationery now!". On the right, there is a circular photo of three smiling school children. Below the photo, the text says "Class lists are ready to shop at myschool.co.nz".

2024 Stationery - Order now and be in to WIN!

Be in to WIN \$1000 when you order back to school stationery in December

We know getting ready for the first day back at school can be a challenge. That's why we've teamed up again with OfficeMax to make your back to school shop super easy. And if you order in December, you'll go in the draw to WIN 1 of 5 \$1000 cash prizes*.

Your child's class list is already loaded. Just jump on myschool.co.nz. Simply add your details, check that you want everything on the list, then click and confirm — and OfficeMax will get your delivery underway.

Order in December and choose to receive your order straight away or in January. We encourage you to order early to ensure your child has all their stationery requirements ready to go in plenty of time for the start of Term 1.

So go ahead and beat the back to school rush, order today and give them the best start possible

OfficeMax makes it super easy with these great benefits

- **Free delivery** on orders over \$70^
- **Pay now or in easy instalments** — internet banking, credit card, debit card or pay in 6 weekly, interest-free payments with Laybuy*
- **School Rewards** — when you shop on myschool.co.nz we earn rewards* that can be used to purchase extra resources for our school
- **Beat the back to school rush** — avoid queues and busy malls by shopping online from the safety and comfort of your home

*Terms and Conditions apply, see myschool.co.nz for details. ^Exclusions apply, see myschool.co.nz/delivery for details.

Please don't hesitate to contact the office if you have any queries about OfficeMax MySchool. We look forward to your child having a successful start to the 2024 school year!

Library Corner

The library will be closed from Friday the 8th December for our annual stocktake. Could all students please return any issued library books by the end of next week.

For some of our students and staff, 2023 will be your last connection with Plimmerton School. The gift of a book with your family's name inscribed inside the front cover is a wonderful way for us to remember you. We have put together a wish list of books that we would love to have. Just click on this link and you will be directed to The Children's Bookshop. Choose your book, add to cart and then proceed to checkout. Make sure that you select "Click and Collect" and add "For Plimmerton School" in the notes. You will then pay for your book (the click and collect option ensures that postage is not added).

<https://www.thechildrensbookshop.co.nz/wishlists/plimmerton-school/share>

I will collect all books from The Children's Bookshop at the end of the year (and early next year for those on back-order). You may have another book in mind, so please email me or search the catalogue first to ensure that we don't already have it. Thank you so much for your support.

Please remember to check out our library catalogue when searching for books in our library and also to keep up to date with all the latest library news - <https://nz.accessit.online/PLM03>.

Happy reading
Sarah

Yummy Stickers for Sports Gear

Thank you for sending in yummy stickers, we raised \$685. If there are any stickers still at home send them in as they can be used in next year's lot.

2023 Term Dates, Holidays & Teacher Only Days

Term 4

Starts: Monday 9 October

Labour Day - Monday 23 October

Teacher Only Day - Monday 13 November

Ends: Wednesday 20 December (½ day finishing at 12 noon)

2024 Term Dates, Holidays & Teacher Only Days

Term 1

Starts: Thursday 1 February

Waitangi Day - Tuesday 6 February

Easter - Friday 29 March - 2 April

Ends: Friday 12 April

Term 2

Starts: Monday 29 April

Teacher Only Day - Friday 31 May

King's Birthday - Monday 3 June

Matariki - Friday 28 June

Ends: Friday 5 July

Term 3

Starts: Monday 22 July

Ends: Friday 27 September

Term 4

Starts: Monday 14 October

Teacher Only Day - Friday 25 October

Labour Day - Monday 28 October

Ends: Wednesday 18 December

Plimmerton School PTA thanks this year's Gala sponsors

PLIMMERTON
SCHOOL **GALA 2023**

AM JANSSEN
amazing results
Licensed Solicitor (NZ) 2018

GOLD SPONSORS

 **Pacific Horizon**

easyswim
SWIM SCHOOL

 **Leacroft**
NURSERIES

 **NEW WORLD**
Paremata

cityfitness

 **Pacific**
Yogaflow

MITRE 10
MEGA

REVL

 **Palmers**

 **BACK**
YARD
CAFE

 **interislander**
NGĀ WAKA · NEW ZEALAND'S FERRIES

· PORIRUA OWNED ·
EST - 2021
FS CYCLES
We care about you and your bike

Whittaker's
SINCE 1896

 **MEXTED MOTORS** 

the
Bottle-O

PAK'n
SAVE

MOANA RD

 **Hellers**
NZ's Butcher
Sausages
for
Schools

 **Wellington**
Rafting

 **Zohar**
CENTRE OF WELLBEING

 **PHARMACY**
SOLUTIONS

MANA PHARMACY

SILVER SPONSORS

HELLO FRESH

MEXTED SPORTS TURF

PLIMMERTON THAI

NATRAJ

DIRT FARM RETREAT

MY FOODBAG

JD CONSTRUCTION

CHIPMUNKS PLAYLAND

PARKA INSURANCE

AWESOME BOUNCE

PLIMMERTON MOTORS

KAPITI CHOCOLATE FACTORY

NINNESS FUNERAL HOME

BRONZE SPONSORS

BLUEBRIDGE

BATS THEATRE

SPOIL YOURSELF SPA

HURRICANES

WHITBY CO-OP

THE BIG SALAMI

TENNIS CENTRAL

CRICKET WELLINGTON

FISHERMAN'S TABLE

EMBASSY THEATRE

LAVENDAR SPA

CIRCA THEATRE

SMARTAIR SOLUTIONS

KAFE ORANJE

HANGDOG CLIMBING

LIGHTHOUSE CINEMA

STAGLANDS

ADRENALIN FOREST

WELLINGTON PHOENIX

HAIR BY THE SEA

NZSO

FOXTON FIZZ

KITESURF NZ

FLAME HAIR STYLISTS

PLIMMERTON FISH SUPPLY

YOUR WELLINGTON FLORIST

ADRIANA WATSON - HARCOURTS

PETE LAMB FISHING CHARTERS

PLIMMERTON SCHOOL OF DANCE

HELEN O'GRADY DRAMA

Community Notices



Enrolments are now open for Kelly Sports Pre-Christmas and January 2024 School Holiday Programme!

Come join Connor and the Kelly Sports team for another action-packed programme!! It's going to be the best programme yet!!! We have some fantastic days planned including:

Pre - Christmas Holiday Programme: Super Hero Day, Summer Camp Day, All Out Athletics Day plus a trip day to Avalon Park for a Picnic and Mr Whippy will be there for an ice cream!

January 2024 Holiday Programme: Ball Blast, Ready, Set, Splash!, Kids Choice, Tag Your It!, Sports Mash Up, Basketball Superstars, March To Victory, Kiwiana Summer, H2O Let's Go!
Plus trips to: Wellington Zoo, Laser force, Ice Skating, Movies (Movie to be confirmed), Ten Pin Bowling plus lots lots more!!

You can enrol for the Pre Christmas & January 2021 Holiday Programme at www.kellysports.co.nz



Did you know our wai can run dry?

This summer, Wellington's got to work together to protect our precious water.

Can you make at least one of the water saving tips below a habit?

- Turn your tap off when you brush your teeth
- Try having a shower in just four minutes!
- Press the 'half flush' button on your loo

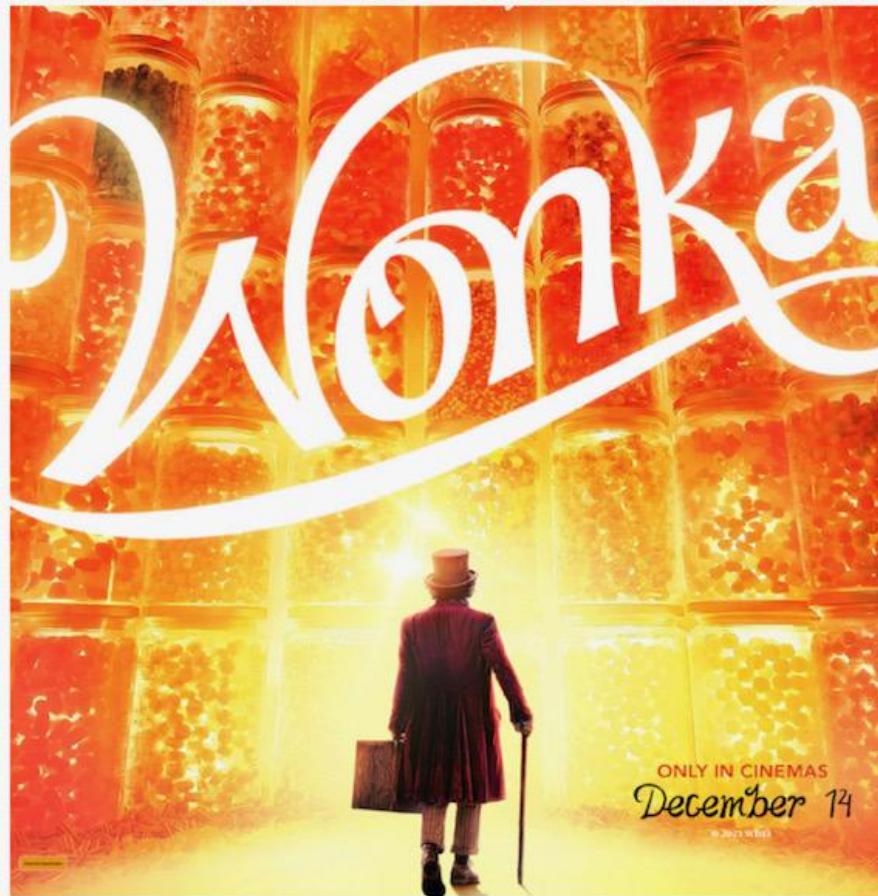
Even better, come up with a new water saving tip and WIN!

Get your friends or whānau together and brainstorm your best water saving tips! If your tip is the winner, you'll get a \$50 Prezzy Card.

Just send in your water saving tips by December 15th to info@wellingtonwater.co.nz with the subject line "Water Saving Tip Competition" and you're in the draw.

Looking for more water saving tips? Head to WellingtonWater.co.nz for loads more.

**YOU'RE INVITED TO A
FUNDRAISER SCREENING OF**



Rating TBC

**LIGHT HOUSE PAUATAHANUI
3 PAEKAKARIKI HILL ROAD
THURSDAY 14TH DECEMBER 5.45PM**

**ARRIVE FROM 5PM | TICKETS \$22
(INCLUDES A FOXTON FIZZ & WHITTAKERS SANTE BAR)**

Fundraising for Aotea College
trip of a lifetime to Japan

**To RSVP please email
WonkaAotea@gmail.com**

ARTY FARTY KIDS - Mini Christmas Art Sessions

We are running some Mini Christmas Art Sessions when the children finish for the holidays. Take a look at what we are doing and see if the Arty Farty Kid in your life may want to join us.

Please get in touch with us asap as sessions book up very quickly!

Contact office.artyfartykids@

Arty Farty Kids LTD 022 174 8558

CHRISTMAS ART SESSIONS				
	Monday 18th Dec	Tuesday 19th Dec	Wednesday 20th Dec	Thursday 21st Dec
AM 10.00am - 12.00pm	Rudolf Painting  Ages 10 - 13 years	Christmas Angel  Ages 10 - 13 years	Star Decoration & Hot Chocolate Jar  Ages 10 - 13 years	Snowflake Decoration  Ages 5 - 10 years
PM 2.00pm - 4.00pm	Snowman Skittle Game  Ages 5 - 13 years	Snowman Lolly Pot  Ages 10 - 13 years	Elf Painting  Ages 5 - 10 years	Winter Snow Scene  Ages 5 - 10 years

Ages 10 - 13 year olds | Christmas Angel | Star Decoration & Hot Chocolate Jar | Rudolf Painting

The Academy of Dramatic Arts proudly presents

The Gingerbread TWINS!

A Christmas story at Kapiti Playhouse Theatre

7 Ruahine Street, Paraparaumu

07, 08, 09 December - 6.30 pm

09, 10 December - 2.30 pm

All seats \$10

EFTPOS at theatre

Contact Andrew 027 444 0362 for bookings and info:

theacademy@extra.co.nz

AKOTECH CodeCamps Summer School Holidays - FREE PRIZE & EARLY DISCOUNTS

Our holiday camp allows children from the ages of 7-12 to develop 21st century skills in a fun and action packed environment. Create and train your own AI Avatars, make games, code drones & go to work for a simulated Tech Gaming Studio to build games for a big pretend client. Develop confidence & initiative through design, creativity, solving problems, presenting & collaboration. Create your own games, worlds and apps to make our world a better place. We also have **Literati Lab** just for girls

Enter our competition to win a FREE 4 day pass to one of our CodeCamps

Venues: Thorndon, Khandallah & Silverstream Dates: 8th - 11th & 15th - 18th January

Book Now at www.akotech.nz Competition: www.codecamp.co.nz/competition

EarlyBird Save Up to 21% Until 14th December - Siblings Save 6%

— AkoTech Ltd — Since 2016

AkoTech

CODECAMP

HOLIDAY PROGRAM

NINJA **HACKER** **DEVELOPER**

Metaverse, AI Design, Coding & Robotics

... and Literary Lab For Girls

2 Day Program \$230 - 4 Day Program \$395

Otaki Players Society Invites you to

THE ROCKY HORROR PICTURE SHOW

SOUTHWARD THEATRE
PARAPARAUMU
7th 8th & 9th Dec 2023
7.00pm
"Meal & Movie"
Bookings: www.otakiplayers.nz

Calling all parents and guardians this one's for you!

December 7,8,9 at Southwards Car Museum

Otaki Players present a screening of The Rocky Horror Picture Show

Unleash Your Inner Rocky at Our Christmas Spectacular! This Christmas, join us for a night of absolute pleasure and festive delight! 🎉 Feature Presentation: We're screening the iconic Rocky Horror Show for an unforgettable night at the movies. Sing along, dance, and let loose with Dr. Frank-N-Furter and the gang! There will be a meal and plenty of participation... TICKETS: otakiplayers.nz/1/pages/280-rocky-horror-picture-show

Kia ora Plimmerton School parents!

Are you looking for childcare over the summer holidays? My name is Lisa Thompson, and I am an experienced and dedicated nanny/babysitter who would love to help out!

Here's how I will be a great fit for your family:

- I am 25 years old, mature and responsible
- Available 8am - 12am seven days a week, and also for long-term bookings
- Full driver's licence
- Fun, caring and 'the favourite babysitter' - I come with a reference!
- Fluent in NZSL and experienced working with Deaf children
- First-aid certified

Please get in touch via 021 027 20646 or lisat.nzsl@gmail.com. Thanks!



The poster features a festive background with a grey and white bokeh effect. In the top left, there is a red Santa hat with a gold bell next to the Porirua Women & Family Centre logo, which consists of two purple silhouettes of a woman and a child. The text 'PORIRUA WOMEN & FAMILY CENTRE' is in purple. To the right, the words 'CHRISTMAS DONATIONS' are written in large, bold, red capital letters. Below this, the text 'WHAT WE NEED:' is in red, followed by a list of items: Toys, Bath & Body Sets, Toiletries, Fragrance Sets, Gift Cards, and Canned Food. To the right of the list, it says 'We would like to reach out to the community for gift donations for our Women and their children.' Below that, in red, it says 'Gift donations are welcome from now until Monday 18th December.' Further down, in red, it says 'Donations can be dropped to our Women & Family Centre 9 LYDNEY PLACE SOUTH, PORIRUA.' At the bottom right, the hours 'MONDAY - FRIDAY 9.30AM - 3.30PM' are listed. The bottom of the poster is decorated with a green Christmas tree, several wrapped gifts, a reindeer, and Santa Claus.

CHRISTMAS DONATIONS

WHAT WE NEED:

- Toys
- Bath & Body Sets
- Toiletries
- Fragrance Sets
- Gift Cards
- Canned Food

We would like to reach out to the community for gift donations for our Women and their children.

Gift donations are welcome from now until Monday 18th December.

Donations can be dropped to our Women & Family Centre
9 LYDNEY PLACE SOUTH, PORIRUA.

MONDAY - FRIDAY
9.30AM - 3.30PM

Are you the next Star of Christmas?

Win the opportunity to record a Christmas carol in studio with Nathan King from Zed



The grand prize

The opportunity to record a cover of a Christmas carol in studio with Nathan King from Zed, return flights to Auckland for two (so you can bring a grown-up), hotel accommodation for one night and a studio tour. The song will be played on the 2024 *Crazy Kiwi Christmas Kids Show* on Newstalk ZB.

To enter

Must be under 13 years old. Email a recording of yourself singing a Christmas carol to christmas@newstalkzb.co.nz - including your name, age and telephone number. Entries close 11.59pm, Monday, 11 December.

Listen to Newstalk ZB on Christmas morning from 6am to find out if you've won!

Newstalk
ZB



ŌTAKI CHRISTMAS Market

Rātapu | Sunday

**10
DEC**

10am - 2pm
main highway, Otaki

50 + stalls
Delicious kai
Ice Cream
FREE crafting table
Facepainting
Christmas Trees

otakiwomensclub.org/christmasmarket

**get
back to school
ready!**

**OfficeMax[™]
MySCHOOL**

**Beat the rush!
Order your
back to school
stationery in
December**



BE IN TO

WIN

\$1000 CASH

5x TO BE WON

Order by December 31st. See reverse for details.

**Give them the best
start possible.**

We know getting ready for the first day back at school can be a challenge for parents and kids. That's why we've made your back to school shop super easy. Do it early and give them the best possible start.

Your child's class list is already loaded. Just jump on to myschool.co.nz. Simply add your details, check that you want everything on the list, then click and confirm – and we'll get your delivery underway.



Pay it in 6 weekly interest
free payments with



Terms and conditions myschool.co.nz/laybuy

free
delivery
on orders over \$70



Exclusions apply myschool.co.nz/delivery

myschool.co.nz
0800 724 440

Ordering is super easy.



Go to
myschool.co.nz
to find your
school list



Check that
you want
everything on
the list



Enter your
details and
choose how
to pay



Choose when
you want your
order delivered,
before Xmas or
in January



Your delivery
is underway
**PLUS you're
in to win***

*Terms and conditions
apply. See below
for details.



ORDER IN DECEMBER AND BEAT THE RUSH...



Choose how you pay.

You can pay by internet banking,
credit card or debit card. Plus, we've
partnered with Laybuy, so you can pay
in 6 weekly interest-free payments and
still get your order right away.

See myschool.co.nz/laybuy for terms and conditions.

Please note: School donations and charges will be charged when you place
your order. You cannot use Laybuy to pay for school donations and charges.

Choose when you want it.

Whether you want your order
delivered before Christmas, or in
the new year – the OfficeMax team
will make it happen.



Help yourself. Help your School.

Earn School Rewards
with every order. It's our
way of giving back to the
community, and it helps
your school get the extra
things they really need.

See myschool.co.nz/school-rewards for
terms and conditions.

**Order in
December**

and be in to

WIN

See below for details

*PROMOTION TERMS & CONDITIONS: 1st December 2023 – 31st December 2023. The promotion (Promotion) gives you the option to order goods in December and choose whether you receive the goods in December 2023 or January 2024. 1. The Promotion is only available for orders placed online at myschool.co.nz in December 2023. 2. Payment options include: internet banking, credit/debit card, or Laybuy (see myschool.co.nz/laybuy for terms and conditions). 3. School donations and other charges will be charged when you place your order. These are paid direct to the school and will show as a separate transaction. Payment for school donations and other charges can only be made by internet banking (if your school has opted for this payment method) or on your credit/debit card. 4. If you buy in December 2023 you will be automatically entered into the draw. The prize is \$1000 cash, 5 to be won. The winners will be notified by 22nd January 2024 by telephone or email. Inability to contact any winner by close of business on 30th January 2024 will result in the prize being forfeited and a further draw will be conducted. Winners consent to their name and photo being used for public relations purposes relating to this promotion. 5. School stationery lists are published as soon as your school has approved them for publication. OfficeMax is not responsible if the Promotion is shortened due to any delay in OfficeMax receiving approved lists. 6. The Promoter is OfficeMax New Zealand Limited, 30 Sir Woolf Fisher Drive, East Tamaki, Auckland.

PĀUATAHANUI ANGLICAN PARISH **CHRISTMAS SERVICES:**

ST. ANDREW'S CHURCH, PLIMMERTON

Sunday, 17th December – 7:30pm
NINE LESSONS AND CAROLS

Sunday, 24th December – 4:00pm
CHRISTINGLE (Children's) SERVICE

Sunday, 24th December – 11pm
MIDNIGHT SERVICE

Monday, 25th December – 9.30am
CHRISTMAS DAY SERVICE

ST. ALBAN'S CHURCH, PĀUATAHANUI

Sunday, 24th December – 8pm
CHRISTMAS SERVICE

